

**THE CORPORATION OF THE CITY OF SAULT STE. MARIE**

**BY-LAW NO. 2025-19**

**ZONING:** A by-law to amend Sault Ste. Marie Zoning By-laws 2005-150 and 2005-151 concerning lands located at 690 Black Road (2640038 Ontario Inc. – Scott Wolowich).

**THE COUNCIL** of The Corporation of the City of Sault Ste. Marie, pursuant to section 34 of the *Planning Act*, R.S.O. 1990, c. P.13 and amendments thereto, **ENACTS** as follows:

1. **690 BLACK ROAD; LOCATED ON THE EAST SIDE OF BLACK ROAD, APPROXIMATELY 200 METRES NORTH OF THE INTERSECTION OF BLACK ROAD AND SECOND LINE EAST; CHANGE FROM RA.S429 WITH A “SPECIAL EXCEPTION” TO M1.S429 WITH AN AMENDED “SPECIAL EXCEPTION”**

The zone designation on the lands described in Section 2 of this by-law, which lands are shown on Map 88/516/1-98 of Schedule “A” to By-law 2005-150, is changed from RA.S429 (Rural Area) zone with a “Special Exception” to M1.S429 (Light Industrial) zone with an amended “Special Exception”.

2. **BY-LAW 2005-151 AMENDED**

Section 2(429) of By-law 2005-151 is amended by:

Repealing all existing provisions and replacing them with the following:

“Permit a repair and maintenance shop for hand-held power tools, air tools, and other hand-held tools.”

3. **SCHEDULE “A”**

Schedule “A” hereto forms a part of this by-law.

4. **CERTIFICATE OF CONFORMITY**

It is hereby certified that this by-law is in conformity with the Official Plan for the City of Sault Ste. Marie authorized and in force on the day of the passing of this by-law.

PASSED in Open Council this 3<sup>rd</sup> day of February, 2025.

---

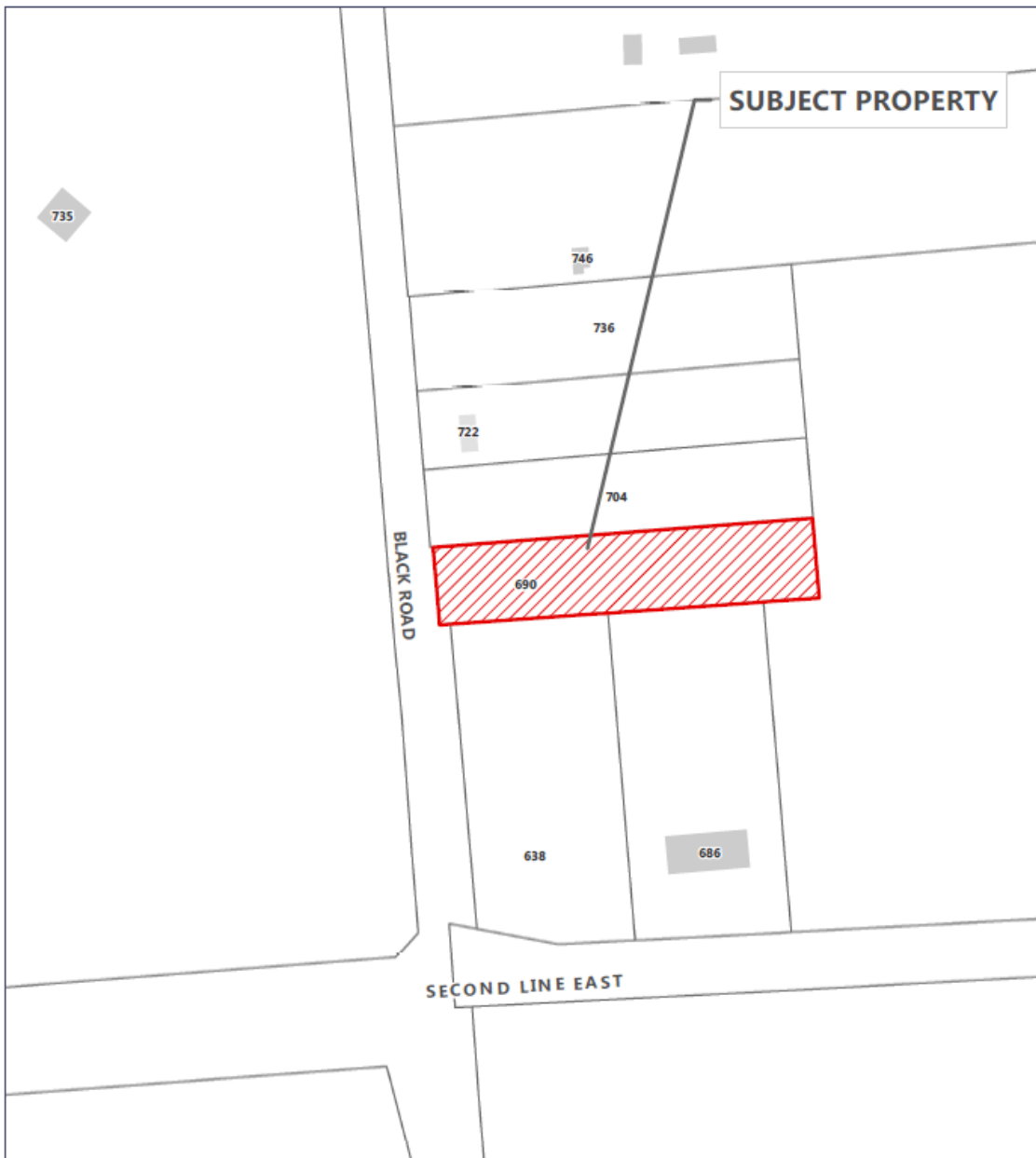
**MAYOR – MATTHEW SHOEMAKER**

---

**CITY CLERK – RACHEL TYCZINSKI**

ep \\citydata\LegalDept\Legal\Staff\LEGAL\ZONING\3. 2025\Black Road, 690\2025-19 Zoning and Amended Special Exception.docx

SCHEDULE "A" TO BY-LAW 2025-19 AND  
SCHEDULE 429 TO BY-LAW 2005-151





**Application A-13-24: Subject Properties**

**Property Information**



**Planning and Enterprise Services**  
Community Development and Enterprise  
Services Department  
99 Foster Drive, Sault Ste Marie, ON P6A 5X6  
saultstearie.ca | 705-759-5368 | planning@cityssm.on.ca

-  Subject Property
-  Parcel Fabric

Civic Add: 690 Black Rd  
Roll No.: 030082003000000  
Map No.: 88/516/1-98  
Date Created: December 6, 2024

