



# Canuck Wind

Will Colucci  
Project Developer

Toby Shepherd  
Community Engagement Manager  
July 14, 2025



# Agenda

1. Company Overview
2. Ontario Energy Context
3. Project Information
4. Project Benefits
5. Partnerships



# Company Overview

# Overview

**EDF power solutions is a project developer, owner, and operator with end-to-end solutions for every market...**



As developer, owner and operator of one of the largest renewable energy portfolios and second largest project pipeline on the continent, EDF power solutions is active in every market across North America.



With our history of innovation, and deep experience developing and operating renewable energy assets, we bring a full-suite of solutions for grid-scale, distribution-scale, asset optimization and onsite energy.



Our outstanding capabilities allow us to utilize our in-house experts, providing maximal efficiency and end-to-end oversight of any size of energy project.

**...with the capabilities, financial strength and global footprint to help you secure your energy future.**

## EDF power solutions North America

18 GW developed	Grid-Scale Power	
14.6 GW service contracts	Distribution- Scale Power	
42 GW pipeline	Onsite Solutions	
35+ years experience	Asset Optimization	
1,800+ employees		

as of 12/31/23

# Experience in Canada



**16 Years**  
in Canada

EDF power solutions has been developing and operating clean energy projects across the country.



**2,646 MW**  
of projects

Put into service, under construction or contracted across the country.



**4,172 MW**  
pipeline

We continue to expand our energy expertise with projects in various stages of development.



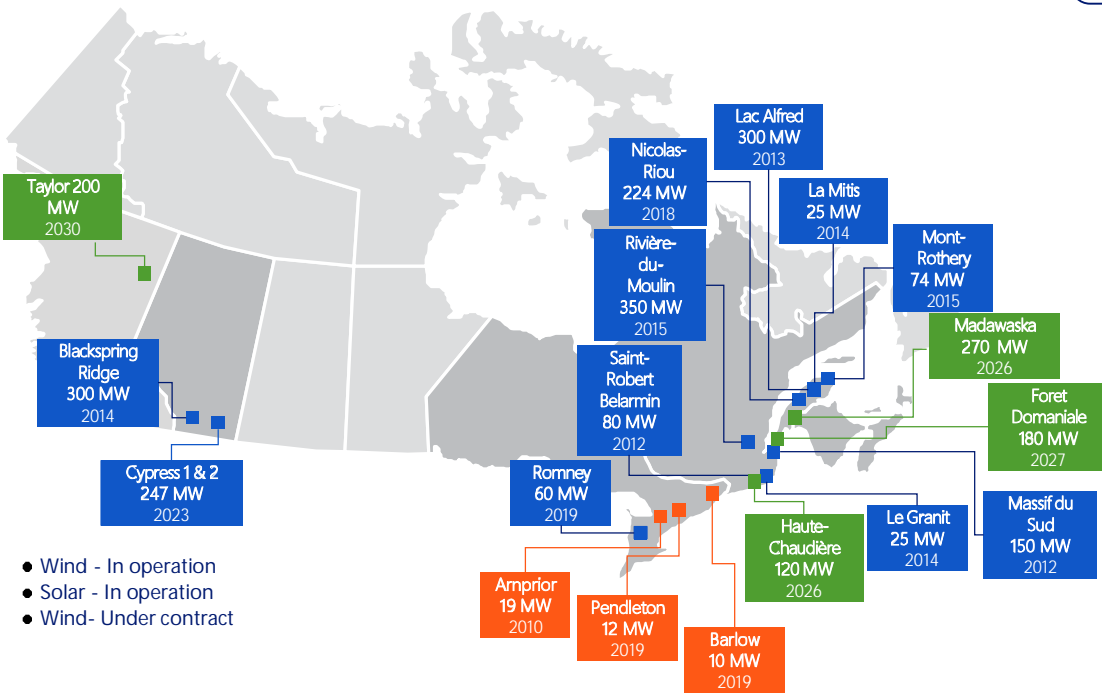
**\$5.2+B**  
invested

Since 2008 in Canada, including support of local wildlife habitats for bats, honeybees and Monarch butterflies.



# EDF power solutions in Canada

**2,646 MW**  
In operation, In construction or under contract



## Domestic presence

- Offices in Montreal , Toronto and Calgary
- 215+ employees across Canada

## Canadian Portfolio

- 1 876 MW in operation (11 Wind / 3 Solar)
- 570 MW under contract (3 Wind)
- Over 2000 MW in Wind, Solar and Storage in development

## Operations & Maintenance

- 1 820 MW Wind
- 457 MW Solar

## Portfolio in numbers

- \$5.2 Billion invested in Canada
- 3 000 jobs at peak construction period
- 475 000 homes supplied with electricity by wind and solar power



# Ontario Energy Context

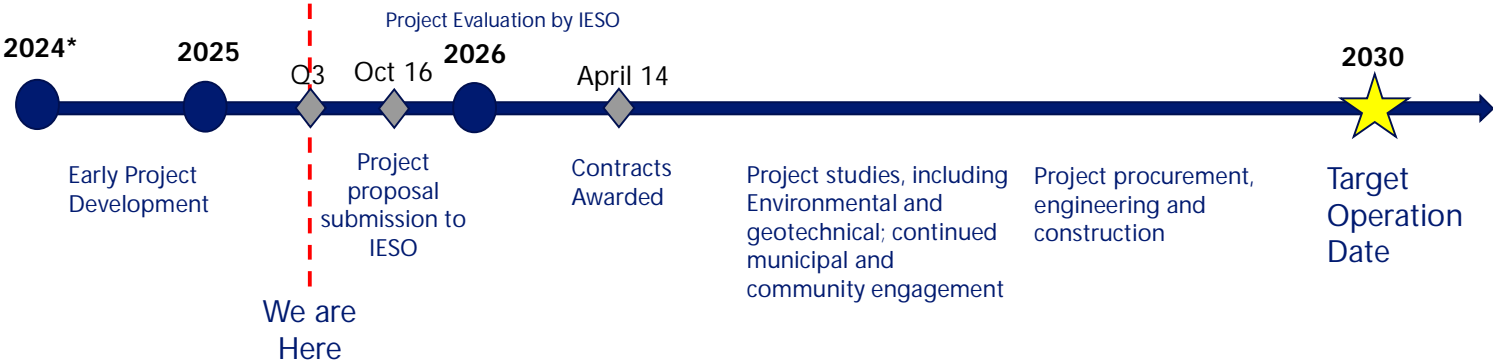


# Ontario's Energy Needs and the RFP

- The energy transition is moving forward at a rapid pace. Province is predicting a 75% increase in electricity demand by 2050.
- The IESO is now addressing overall energy needs going into the 2030's and beyond by procuring more energy.
- IESO signaling that demand is growing in Northern Ontario and new supply is needed.
- IESO planning predictable Long Term (LT) procurements. Latest plans indicate an annual cycle of procurements running from 2025-2028 for LT2.
- EDF power solutions is developing projects to submit to the IESO in **October 2025**, part of the IESO's LT2 W1 procurement.



# IESO LT2 Procurement Timeline



Note: If the project proceeds, there will be a 2-3 year; community, municipal and indigenous consultation and engagement process, to ensure the project is well designed and that infrastructure is suitably located to avoid and mitigate potential impacts.

\* Timelines are estimates based on information we have to date and may change.

# LT2 RFP Requirements

Municipal Resolution	<ul style="list-style-type: none"><li>Simply allows EDF to continue development; A municipal resolution does not preclude any permitting decisions at the municipal level. Could be project specific or blanket.</li></ul>
Proponent Experience	<ul style="list-style-type: none"><li>Proponents must have proven experience in Planning, Developing, Financing, Constructing and Operating projects.</li></ul>
Criteria Points	<ul style="list-style-type: none"><li>Additional criteria points are awarded to projects sited in the North, who have Local Indigenous participation, and who avoid agricultural lands.</li></ul>
Pre Engagement Confirmation Notice	<ul style="list-style-type: none"><li>This Notice sent to the applicable Local Body Administrator dated no later than 60 days before proposal submission deadline.</li></ul>
Crown Land Site Report	<ul style="list-style-type: none"><li>Required for any portion of the project on crown lands.</li></ul>

# IESO Bid Preparation

- As part of the process the IESO requires that bidders include a prescribed form from the Municipality with their application.
- This prescribed form can be general i.e. the municipality as a whole or project specific.
- Guidance from the IESO:
  - “the municipality supports the submission of a proposal for the Long-Term Energy Project located on the applicable Municipal Lands. The statement in such a resolution **may be qualified as being solely for the purposes of satisfying the mandatory requirements** under section 4.2(b) of the LT2(e-1) RFP and **does not supersede any applicable permits or approvals under applicable laws and regulations** that may be required for a particular Long-Term Energy Project. ”
- Providing a resolution is NOT approval of the project, just allows the submission of a bid. The project would still need to go through a 2-3 year permitting and public consultation process.
- IESO is still reviewing RFP documents, anticipates publishing the final versions soon.





# Project Information

# Why Sault Ste. Marie?



## Strong Winds & Transmission

- The study area has consistent and strong wind speeds suitable for a project
- There are multiple interconnection options with suitable capacity that will allow for electricity to be used locally as well as throughout Ontario



## Rated Criteria Points

- IESO is providing rated criteria points for projects located in the two IESO 'North Zones', for projects not sited on agricultural land, and for having a local indigenous partner

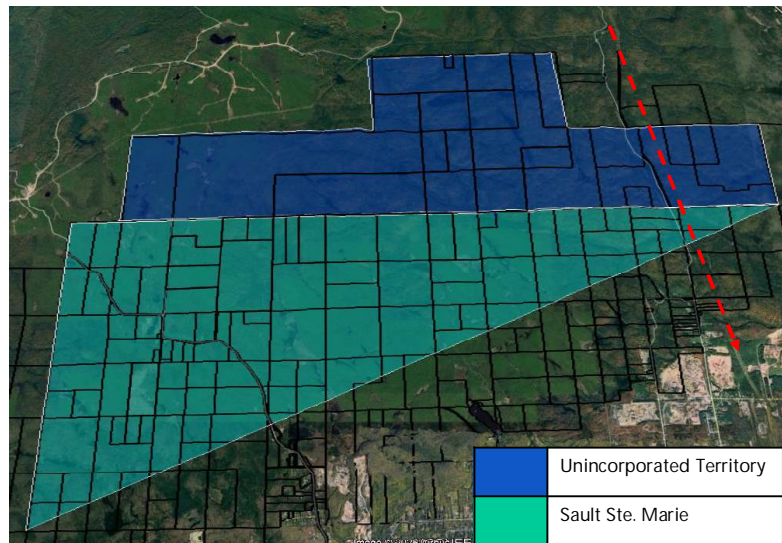


## Suitable lands

- EDF has engaged with landowners and local stakeholders since early 2024 and have received very positive feedback and interest.
- No major environmental constraints identified
- Proximity to serviceable ports and highways for construction
- Currently have ~4000 acres signed in the project study area

# Canuck Wind Project

- The proposed study area is approximately 10 kms north of Sault Ste Marie. The project would also include portions of Prince Township and Pennefather and Aweres Townships.
- The site was selected because:
  - There is a strong wind resource. We have two met towers installed on site, collecting data in the area with positive results.
  - It is close to existing transmission lines with capacity to connect the project.
  - Site feasibility studies completed – no major obstacles to development.
  - There is a desire to host wind turbines by private landowners. 4,000 acres signed to date.
  - Wind energy has been delivering electricity in this area for almost 20 years.
- The total project size is approximately 30-35 turbines. For context the existing Prince Wind project is 126 turbines. Approximately 15-18 wind turbines are proposed to be located in Sault St Marie.



# Environmental Studies and Permitting

Environmental studies work will be completed and submitted to the Ministry of Environment, Conservation and Parks (MECP) for approval if the RFP is successful.

- Renewable Energy Approval (REA) Report Requirements:
  - Engineering Reports: Project Description Report, Construction Report, Design & Operations Report and Decommissioning Report
  - Natural Heritage Assessment (Site Investigation, Environmental Impact Study, Species at Risk Report )
  - Water Report
  - Archaeological Assessment Reports
  - Cultural Heritage Assessment Report
  - Consultation Report (Municipal, Public, Federal/Provincial Agencies, Open House information)
  - Noise Impact Study

# Recycling

EDF power solutions has committed to reuse, recycle, or recover all decommissioned wind turbine blades.

- **Towers:** 100% steel and recyclable
- **Blade Recycling and Reuse Options:** fortified cement, creating 3D printed furniture, repurposing them for structures such as bridges, play gyms for children, and soundwalls
- **Inspection & Repair:** EDF will continue industry leading inspection and repair services, which reduce the need for blade replacement by extending the useful life of each blade.
- **Environmental Impact:** Blades are chemically inert but landfilling is unsustainable.



# Community Engagement

EDF Renewables prioritizes having an active presence in the community and responding to local interests. We engage early with stakeholders, connecting during the siting and permitting process and nurturing these relationships through installation and operation.

## **Engagement:**

- SSM:
  - First reached out to SSM staff Dec 2023 to begin early-stage engagement
  - landowner and community engagement beginning in early 2024
  - Mayor and City senior staff on May 8th to provide a project update
  - Met with Director of Planning on June 3rd to begin conversations on planning process and procedures
- Batchewana First Nation and the Metis Nation of Ontario; we will engage other Indigenous Communities as the project progresses
- Sault Ste Marie Conservation Authority
- PUC Services
- We will continue to expand stakeholder engagement as the project progresses

## **Support:**

- United Way of Sault Ste Marie
- Algoma Family Services
- St Vincent Place



# Project Benefits

# Economic Benefits

- **Host Municipal Agreement:** annual payment from EDF to the City to support municipal priorities. \$300K/year x 20 years = \$6 million
- **Host Community Fund:** annual fund set up by EDF to support local priorities. \$25K/year = \$500,000
  - Educational scholarships
  - Public School nutrition program
  - Recreation facilities/trails
  - Local Foundation support
- **Increased Property Tax** covered by EDF; millions of dollars over course of the project
- **Lease payments** to landowners
  - Project revenue-sharing
  - Turbine payments: ~\$7.5M (SSM only)



# Economic Benefits

EDF will focus procurement of materials and hiring as locally as possible.

- 200 MW wind project ~ \$580 million in capex
- 30% spent on Balance of Plant ~\$175 million and significant amount of that spent locally
  - 16-20 months of construction, with a peak of 200 staff, average of 100
  - Room/Board: local spending for lodging, food, and small businesses in support of construction workers
  - Concrete and rebar supply
  - Equipment rental
- Opportunities for work:
  - Surveying, Civil engineering, Mechanical Work, Electrical work, Transportation equipment, labourers, etc.
  - Maintenance of paths, snow removal, vehicle maintenance
  - Hospitality and other worker services



# Host Community Fund: Romney Wind

In 2019, EDF Renewables launched the **Wheatley Area Community Fund**. The goal is to award \$25,000 annually, to be spent on local community-driven initiatives in the village of Wheatley. The Fund is pleased to have presented to the following organizations for 2024:

Village Resource Centre

Wheatley BIA

Wheatley Community Chest

Wheatley Horticultural Society

Wheatley Junior Hockey Club

Wheatley Recreation

Talbot Trail Golf Club

The Meadows of Wheatley

Two Creeks Mountain Bike Trail Association

Wheatley Two Creeks Association

Wheatley Fish Fest Committee



The perfect night for our intro to Pickle ball clinic! Lots of fun had by all participants. Big shout out to Wheatley Hockey and EDF for their generous donations. We were able to purchase nets, paddles and balls to help start up our "Wheatley Pickle ball". Also special thanks to Jay S., from "The Ontario Pickle Ball", store in Chatham who offered his time to run the clinics.





# Partnerships

# Partnerships with Indigenous Communities

“Partnering with EDF power solutions has been one of the more progressive business partnerships that we’ve engaged in. We want to be able to produce electricity that is much needed by Albertans, Canadians, and North Americans.”

**CHIEF ROY FOX**  
Blood Tribe (Standoff, Alberta)

EDF power solutions portfolio has more than 1,700 MW of projects in partnership with Indigenous communities.



## United States

Arrow Canyon 200 MW, Nevada, 2023  
Chuckwalla 200 MW, Nevada, 2023  
Playa Del Sol 50 MW, Nevada, 2023



## Canada

Cypress, 247 MW, Alberta, 2023  
Romney, 60 MW, Ontario, 2019  
Barlow, 10 MW, Ontario, 2019  
Pendleton, 12 MW, Ontario, 2019  
Nicolas-Riou, 224 MW, Quebec, 2018  
Rivière-du-Moulin, 350 MW, Quebec, 2015

# Indigenous Partnerships in Ontario

## ROMNEY WIND:

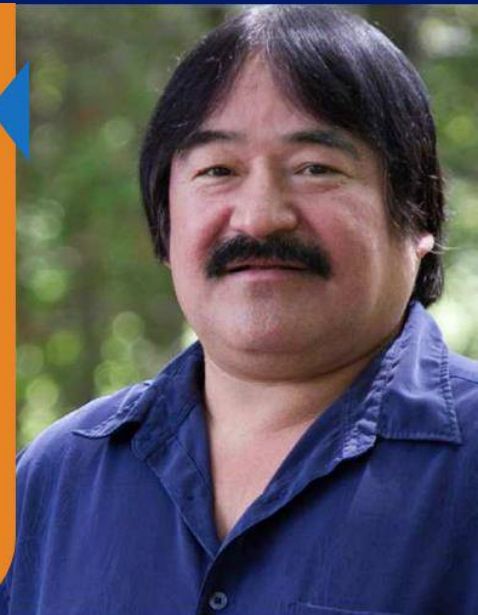
- In 2016, EDF power solutions developed an equity partnership with the Aamjiwnaang First Nation (ON) to develop the 60 MW Romney Wind Project located near Chatham, ON.
- The project started construction in 2018 and operation began in 2020.

## BARLOW & PENDLETON SOLAR:

- In 2016, EDF power solutions developed an equity partnership with the Algonquins of Pikwakanagan First Nation (ON) to build 22 MW of solar at Barlow and Pendleton Solar Energy Centres.
- The projects started construction in 2018 and operation began in 2019.

“The Algonquins of Pikwakanagan are excited to form a partnership with EDF Renewables for the development and generation of renewable energy. This initiative will bring forth important economic benefits to the First Nation while continuing to foster the preservation of our environment”

*Chief Kirby Whiteduck,  
Chief of the Algonquins of  
Pikwakanagan*



# Canuck Wind Summary

- EDF Power Solutions is a global leader in renewable energy development and operations
- Proposing a 200MW wind energy project to be submitted to the IESO LT2 W1 Procurement
- The project will provide significant benefits to the local community:
  - Host Municipality Agreement- ~\$6,000,000
  - Host Community Agreement- ~\$500,000
  - Project participation and revenue-sharing
  - Job creation and economic development
- Project development is underway with the completion of feasibility assessments and ongoing stakeholder engagement
- Detailed engineering and permitting work to be completed over the next 2-3 years
- Ongoing indigenous engagement and escalating negotiations with our potential First Nation partner to complete the formation of a formal equity partnership
- Construction to start in 2028 with a commercial operations date of May 2030



*Thank you*



Energy Designed *for the Future.*