

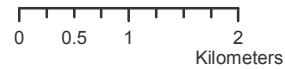


OFFICIAL PLAN MAP SERIES
SCHEDULE 'D'
**NATURAL HERITAGE
FEATURES AND AREAS**

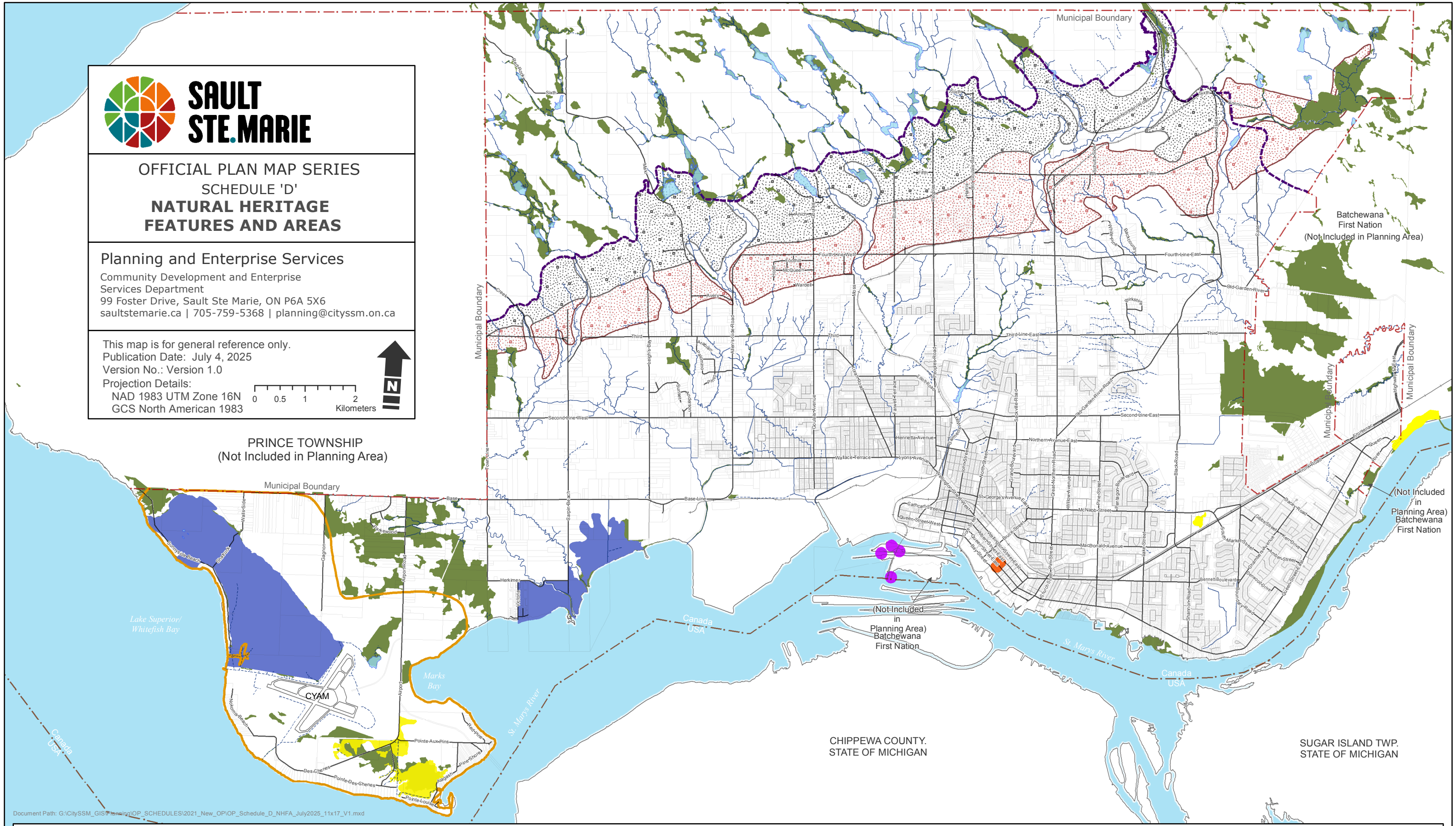
Planning and Enterprise Services

Community Development and Enterprise
Services Department
99 Foster Drive, Sault Ste Marie, ON P6A 5X6
saultstemarie.ca | 705-759-5368 | planning@cityssm.on.ca

This map is for general reference only.
Publication Date: July 4, 2025
Version No.: Version 1.0
Projection Details:
NAD 1983 UTM Zone 16N
GCS North American 1983



PRINCE TOWNSHIP
(Not Included in Planning Area)



Batchewana
First Nation
(Not Included in Planning Area)

(Not Included
in
Planning Area)
Batchewana
First Nation

CHIPPEWA COUNTY.
STATE OF MICHIGAN

SUGAR ISLAND TWP.
STATE OF MICHIGAN

Document Path: G:\CitySSM_GIS\Planning\OP_SCHEDULES\2021_New_OPIOP_Schedule_D_NHFA_July2025_11x17_V1.mxd

- Unevaluated Wetland (OMNR, 2025)
- White-tailed Deer Wintering Area (Stratum 2)
- Fish Habitat - Lakes
- Primary Mineral and Mineral Aggregate Resources
- Evaluated-Other (OMNR, 2025)
- Significant Wildlife Habitat - Peregrine Falcon Nesting Site (OMNR, 2010)
- Rivers
- Secondary Mineral and Mineral Aggregate Resources
- Evaluated-Provincial (OMNR, 2025)
- Endangered/Threatened Species (OMNR, 2018)
- Intermittent Water Course
- Shield Line