

Soo Reliability Project

Proposed LT2 project to the City of Sault Ste Marie

Aypa Power Canada

October 14, 2025

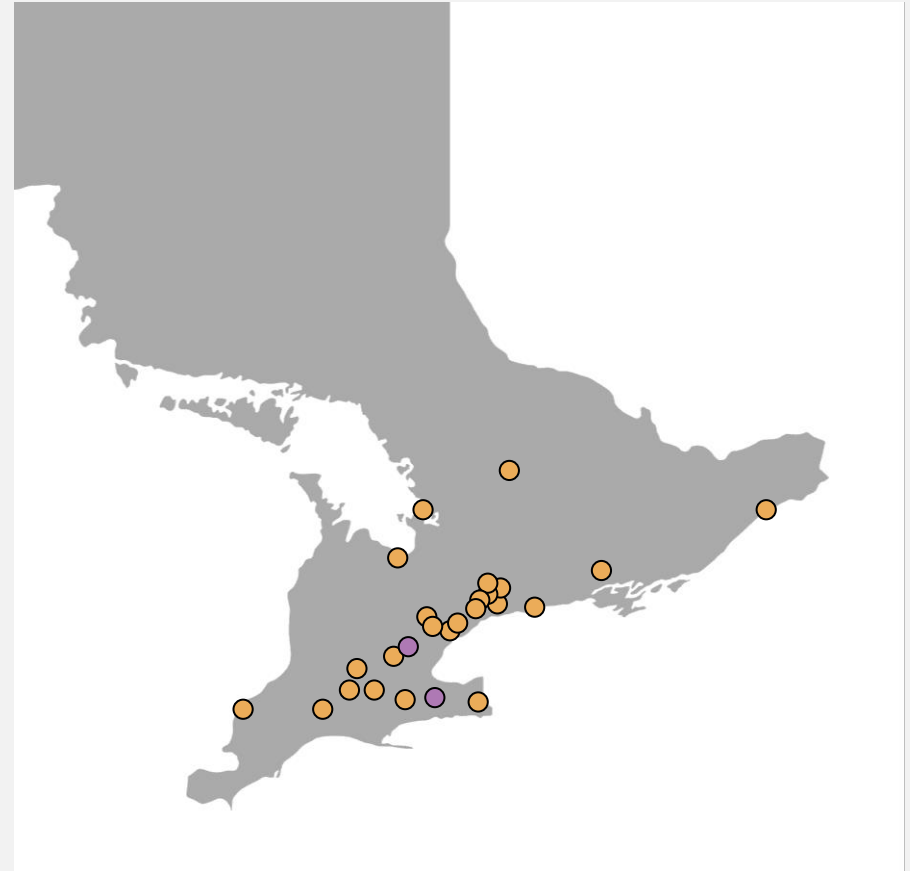
A Trusted Industry Leader

The nation's largest battery energy storage developer

About Aypa Power Canada

Founded in Toronto in 2018, Aypa Power Canada has been developing and operating standalone energy storage and hybrid energy projects to build more resilient communities and support a reliable, sustainable grid.

- World's largest battery storage independent power producer
- 80+ currently projects under development
- 20-gigawatt (GW) project pipeline across North America
- Over 25 operational Canadian battery energy storage assets
- 2 projects selected in IESO's Long-Term Procurement 1 (LT1) and scheduled to start construction in late 2025



Serving the Canadian Grid, Economy & Workforce

Proudly Putting Canada First



Strengthening Energy Independence

We're investing over **\$600 million in energy infrastructure projects across Southwestern Ontario**—directly supporting local grid reliability and energy independence



Investing in a Strong Canadian Supply Chain

Our procurement practices strengthen Canadian partners with **~82% of LT1 project costs contracted to Canadian goods, businesses, and services**



Powering Local Jobs

Our energy storage investments across Southwestern Ontario are creating **400+ construction jobs, powered by a skilled CUSW workforce**

Setting the Standard for Design & Operation



Community Engagement

- Ongoing community outreach
- Local information sessions
- Dedicated project information website
- Indigenous outreach



Respectful Design

- Thoughtful design to align with Sault Ste. Marie community values
- Visual screening to preserve cultural heritage
- Setbacks to avoid disturbance to neighbors



Best-in-Class Safety Approach

- Project-specific emergency response plans
- Meet / exceeds local, provincial and international safety standards
- 24/7 site monitoring

Recent Aypa Power Canada projects selected by the IESO



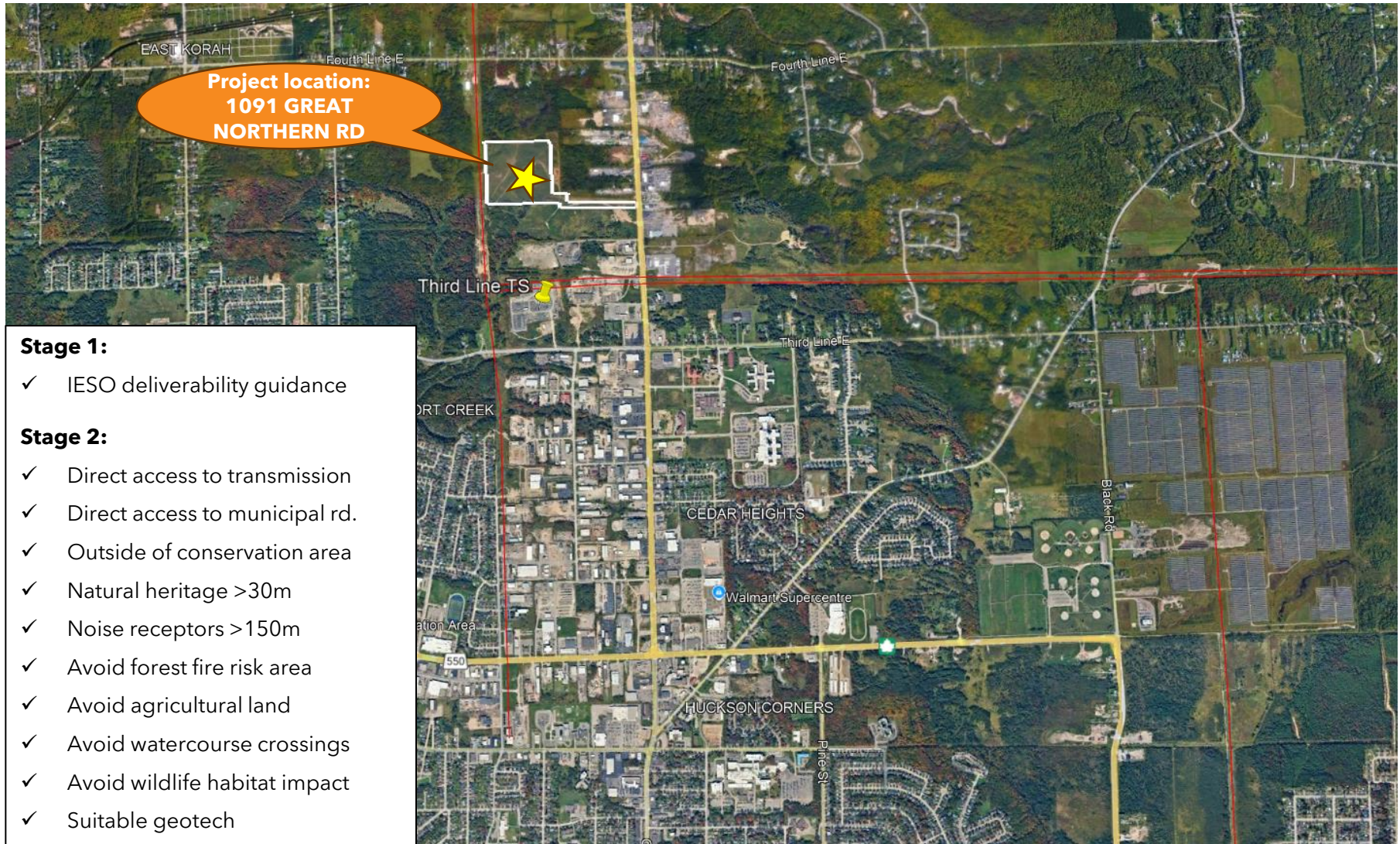
- Nameplate capacity: 210.53MW / 800MWh
- Location: Fergus, ON
- IESO LT1 contract executed Jun.'24
- Target Construction Start: Q4 2025
- Target COD: May 1st, 2027



- Nameplate capacity: 210.53MW / 800MWh
- Location: Jarvis, ON
- IESO LT1 contract executed Jun.'24
- Target Construction Start: Q4 2025
- Target COD: May 1st, 2027

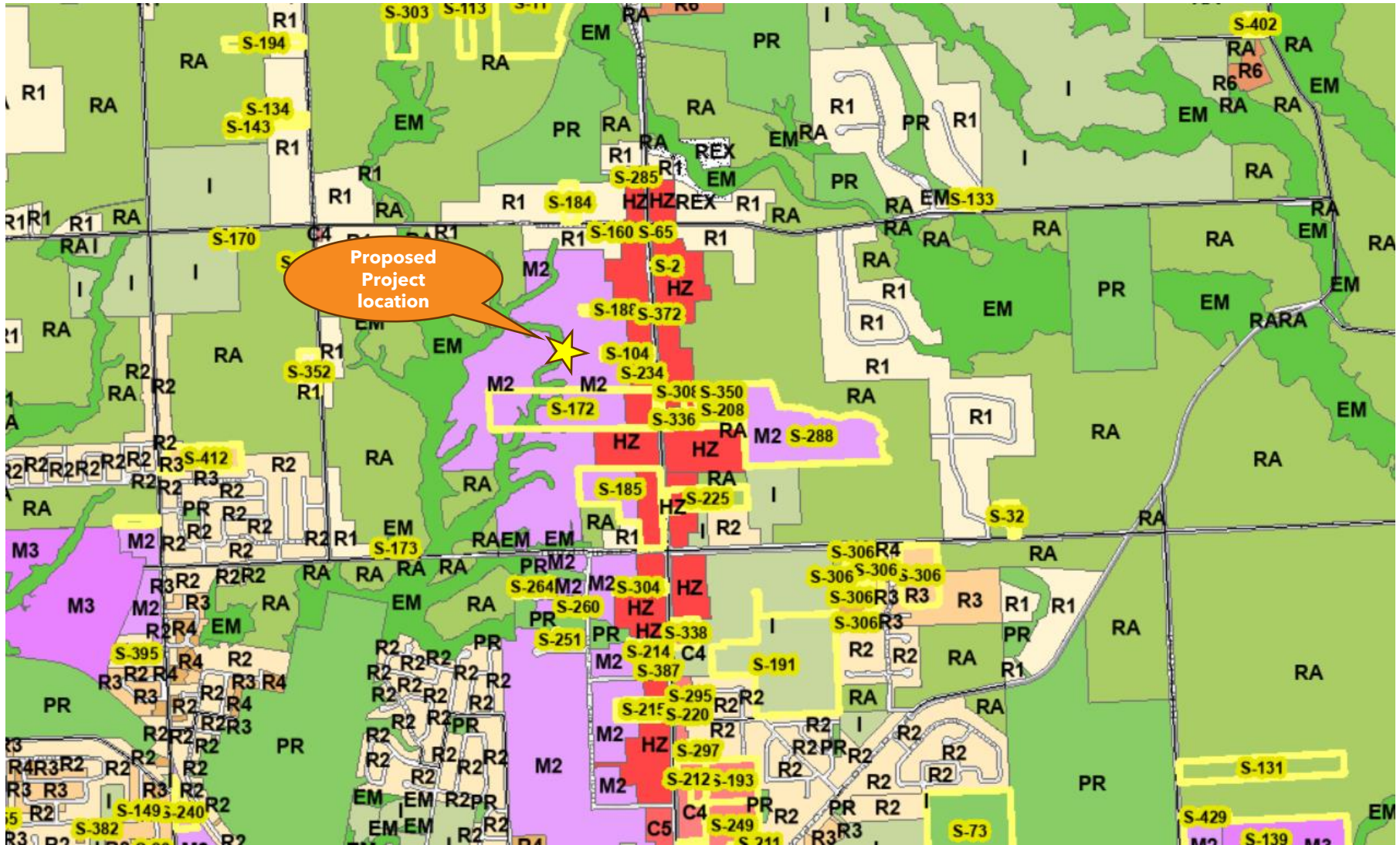
Soo Reliability Project Site Selection Process

Project location meets extensive siting criteria



Soo Reliability Project Site Selection Process

Located in an M2 Industrial Zone



Soo Reliability Project

Up to 380 MW / 8hrs* BESS located in an industrial district of the City of Sault Ste. Marie

* The nameplate capacity of 400MW

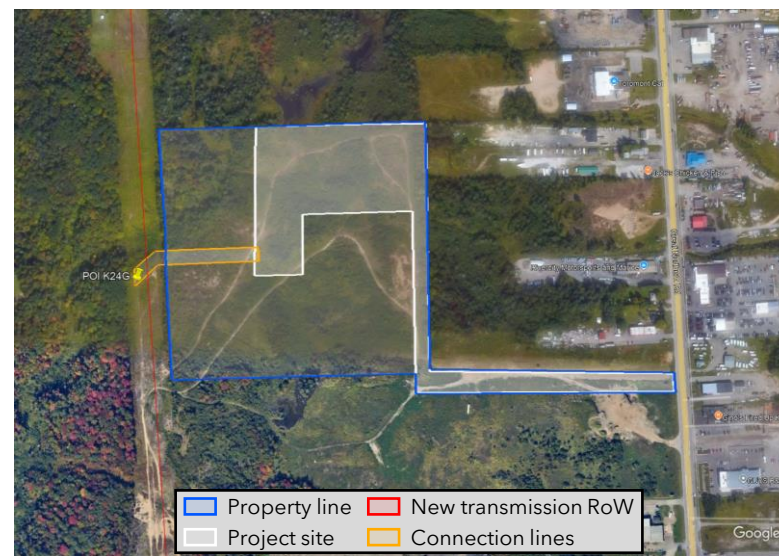
Key Project Details		Development Timeline	
Equivalents	<ul style="list-style-type: none"> Powering 150,000 homes each day Avoiding emissions equal to those produced by 125,000 passenger vehicles each year 	Dec 2025	IESO LT2 Bid Submission
Commercial Offtake	<ul style="list-style-type: none"> 20-21-year fixed price capacity contract with IESO 	2Q 2026	IESO LT2 Contract Award
Land	<ul style="list-style-type: none"> 1091 Great Northern Rd., 30 acres adjacent to the point of interconnection secured via option-to-lease Industrial zoning Neighboring uses are industrial and commercial No sensitive receptors (e.g., homes) within 500 m 	2026-27	Detailed Design & Site Diligence
Environmental Permitting	<ul style="list-style-type: none"> Studies underway/scheduled: <ul style="list-style-type: none"> Environmental and land use constraint analysis Natural heritage baseline study Phase 1 environmental site assessment Comprehensive environmental permitting after the IESO contract award including: <ul style="list-style-type: none"> Class EA ECA for stormwater management 	1Q 2028	Local & Provincial Approvals
Municipal Permitting after LT2 award	<ul style="list-style-type: none"> Zoning by-law amendment, BESS permitted use Site Plan Control Application Building permits 	2Q 2028	Start of Construction
Interconnection	<ul style="list-style-type: none"> Line-tap new 230 kV circuits 	2Q 2029	Start of Commercial Operation
Ownership & Management	<ul style="list-style-type: none"> Estimated investment of approximately \$500M CAD Developed, operated, maintained, and decommissioned by Aypa 24/7/365 remote monitoring 		

Soo Reliability Project II

Up to 190 MW / 8hrs* BESS located in an industrial district of the City of Sault Ste. Marie

* The nameplate capacity of 200MW

Key Project Details		Development Timeline	
Equivalents	<ul style="list-style-type: none"> Powering 150,000 homes each day Avoiding emissions equal to those produced by 125,000 passenger vehicles each year 	Dec 2025	IESO LT2 Bid Submission
Commercial Offtake	<ul style="list-style-type: none"> 20-21-year fixed price capacity contract with IESO 	2Q 2026	IESO LT2 Contract Award
Land	<ul style="list-style-type: none"> 1091 Great Northern Rd., 20 acres adjacent to the point of interconnection secured via option-to-lease Industrial zoning Neighboring uses are industrial and commercial No sensitive receptors (e.g., homes) within 500 m 	2026-27	Detailed Design & Site Diligence
Environmental Permitting	<ul style="list-style-type: none"> Studies underway/scheduled: <ul style="list-style-type: none"> Environmental and land use constraint analysis Natural heritage baseline study Phase 1 environmental site assessment Comprehensive environmental permitting after the IESO contract award including: <ul style="list-style-type: none"> Class EA ECA for stormwater management 	1Q 2028	Local & Provincial Approvals
Municipal Permitting after LT2 award	<ul style="list-style-type: none"> Zoning by-law amendment, BESS permitted use Site Plan Control Application Building permits 	2Q 2028	Start of Construction
Interconnection	<ul style="list-style-type: none"> Line-tap existing 230 kV circuits 	2Q 2029	Start of Commercial Operation
Ownership & Management	<ul style="list-style-type: none"> Estimated investment of approximately \$250M CAD Developed, operated, maintained, and decommissioned by Aypa 24/7/365 remote monitoring 		



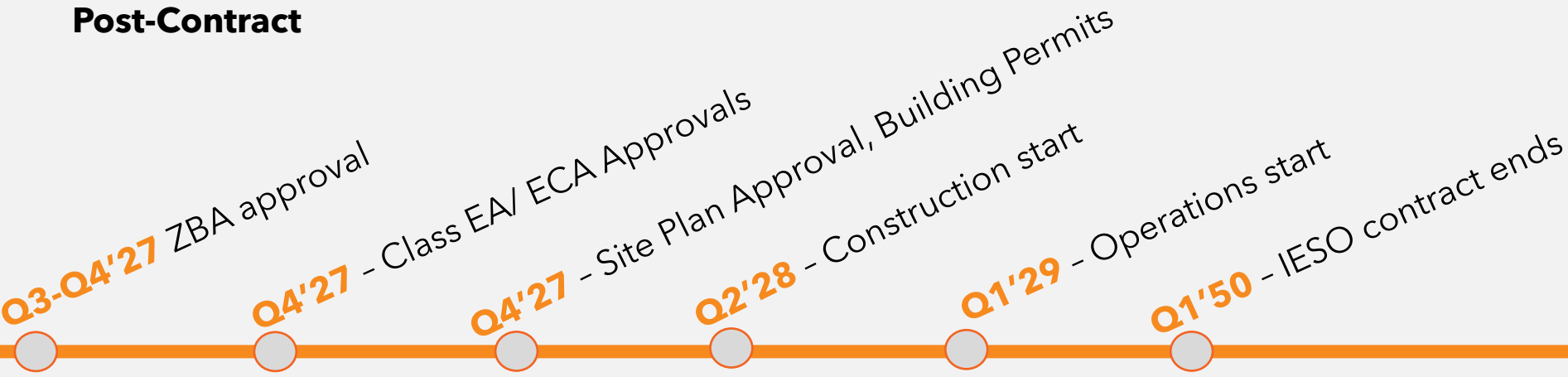
Timeline & Next Steps

***IESO RFP mandatory submission criteria**

Pre-Contract



Post-Contract



Municipal Community Benefits

Investing into the City of Sault Ste Marie

Employment

- Approximately 200-300 temporary full-time jobs during construction
- Approximately six full-time operation & maintenance jobs throughout the project's ~20-year life
- Engagement with local professional associations and/or labour unions to maximize opportunities for local hiring

Local Businesses Growth

- Engagement with local vendors, contractors, and other businesses
- Public announcements of local bid opportunities via the project website
- Equitable access to employment and contract services opportunities

Community Contributions to Sault Ste Marie

- Starting on the first anniversary of the commercial operation date, Aypa will annually contribute \$3,000/MW throughout the duration of the LT2c contract. **380MW for Project I and 190MW for Project II for a total of up to 570 MW which would result in up to \$1.71 million in annual payments to the City.**
- Starting on the first anniversary of the commercial operation date, Aypa will contribute **\$25,000/year** toward supporting community organizations throughout the duration of the LT2c contract.
- Starting on the LT2c agreement execution date until COD, Aypa will contribute **\$10,000/year**
- Additional revenue generated through property taxes



Questions